

NEW

2023-2024

# ADLIS-WEIYIN CATALOGUE



**ADLIS/WEIYIN CORP.**

[www.adlissmart.com](http://www.adlissmart.com)

[www.adlissmart.com/Marketing](http://www.adlissmart.com/Marketing)

[expo.adlissmart.com](http://expo.adlissmart.com)

[www.solarbenchchina.com](http://www.solarbenchchina.com)

Sderot Moriah 104 Haifa

Asher 4 Kyriat Yam

2/F, Building E, Hengchangrong  
Industrial Park, Pinghu Street,  
Longgang District, Shenzhen City,  
Guangdong Province, China

Name: Jane Wu

Phone: +8613823126631

Mail: [sales@solarbenchchina.com](mailto:sales@solarbenchchina.com)

[info@adlissmart.com](mailto:info@adlissmart.com)

[service@adlissmart.com](mailto:service@adlissmart.com)

[service@adlis.co.il](mailto:service@adlis.co.il)

Adlis Smart Platform:

[mori@adlissmart.com](mailto:mori@adlissmart.com)





# About ADLIS-WEIYIN Corporation

The concept in the new technology is the future.  
Simplicity of communication, individual solutions for customers.

Our concepts reflect our imagination and common sense.

We provide a wide range of services, Design 3D/AR/VR/CAD...

We create all the ideas, manufacturing our and your products.

We design prototypes, give us your idea and we create it.

Aaron Donadey  
CEO of Adlis/Weiyin Corporation

[www.adlissmart.com](http://www.adlissmart.com)



**ADLIS SMART STREET FURNITURE**

**ADLIS/WEIYIN CORP.**

To reinvent the future,  
we must all work  
together.



**ADLIS SMART HOME PRODUCT / APP**



**ADLIS SMART HOME CONTAINER / CABIN**



# OUR PRODUCTS

MAKING IDEA



PLANNING



DESIGNING



3D MODELING



MANUFACTURE



PROTOTYPING



Solar Smart Trash/Bin



Solar Smart Box



Solar Smart Bench



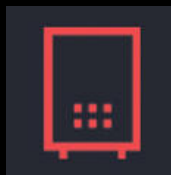
Solar Smart Table

Solar Smart Container

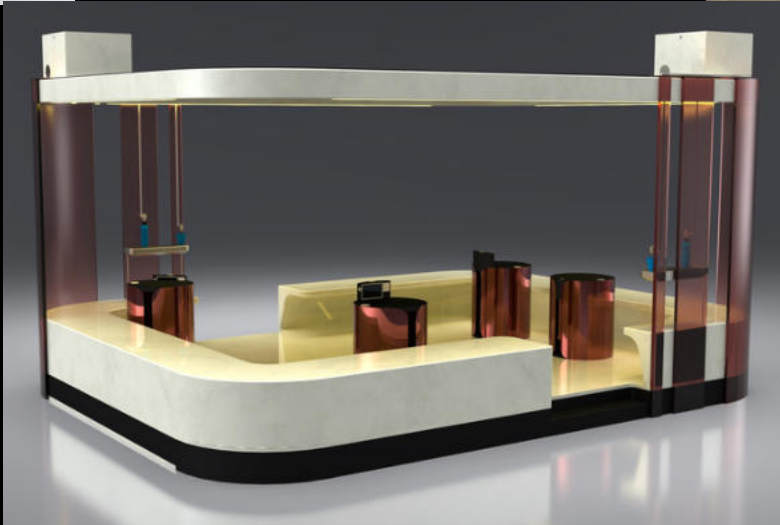


Special Products

Solar Smart Play



Build Your Bench



Solar Smart Charger



Solar Smart Beach



Smart Advertising



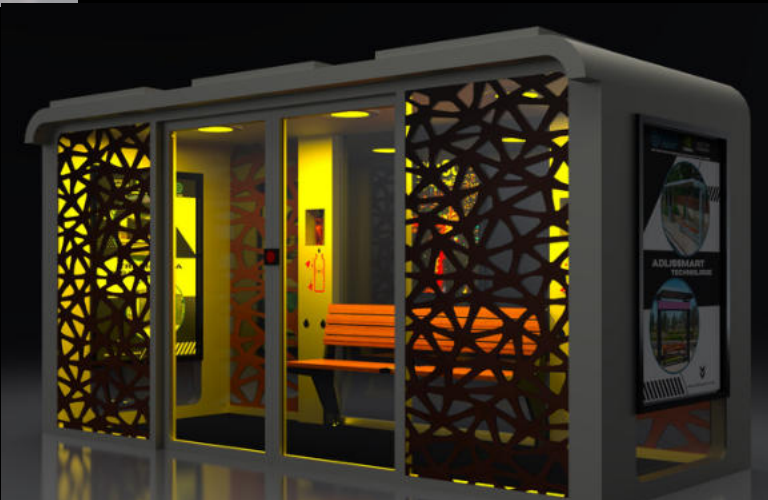
Smart Pergola



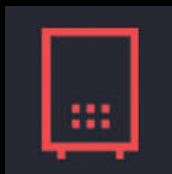
Solar Smart Light



Smart Indoor



Solar Smart Bus



Solar Smart Bike

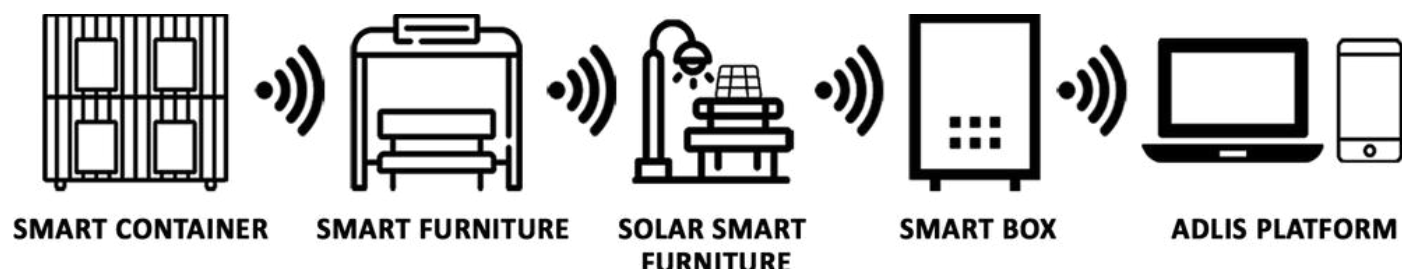




**WE CREATE, MANUFACTURE & EVOLVE**

Contact us and see all the benefits of working with ADLIS SMART.

It's not just doing business; it's being part of a group of people who care about their partners.



For more information about our AI NEW GEN Platform contact:  
[mori@adlissmart.com](mailto:mori@adlissmart.com)  
[Office@OpTeamizer.co.il](mailto:Office@OpTeamizer.co.il)

Leading and managing Solar Smart sustainable products that generate a positive impact for everyone. Join as Official Distributor to work together for a better future.

Chief Business Development

Jane Wu

[sales@solarbenchchina.com](mailto:sales@solarbenchchina.com)

0086 13823126631







SMART  
CITY

ADLIS  
SMART



SMART CONTAINER



SMART FURNITURE



SOLAR SMART  
FURNITURE



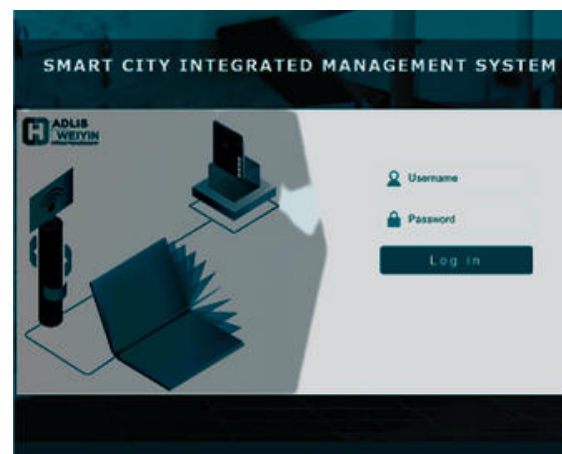
SMART BOX



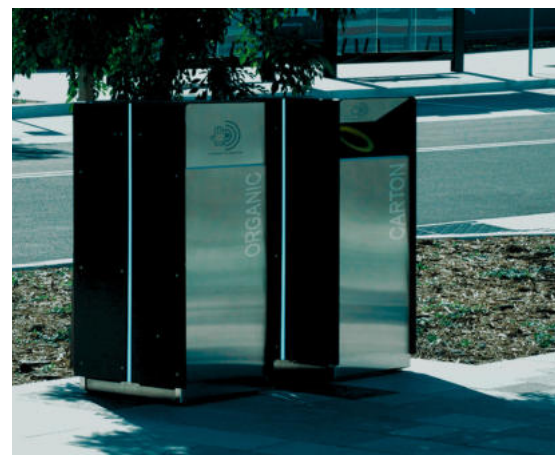
ADLIS PLATFORM



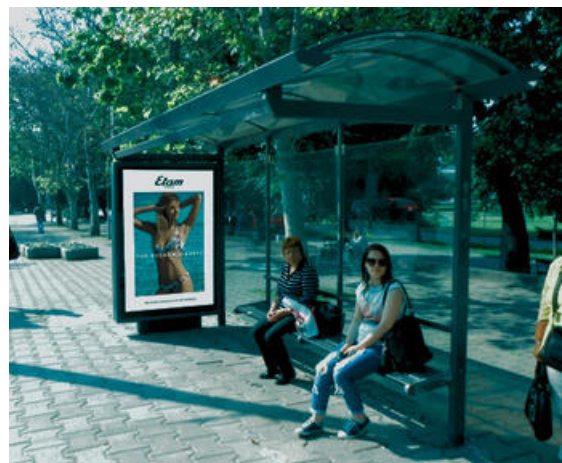
# MAKE YOUR CITY THINK ON BEHALF OF YOU



SMART PLATFORM  
SMART APP  
NVIDIA AI JETSON BOX



SMART STREET FURNITURE  
URBAN ZONES  
STREET/PARK/PLACES  
OUTDOOR/INDOOR



SMART BUS SHELTER



SMART KIOSK/CONTAINER

## SMART CITY INTEGRATED MANAGEMENT SYSTEM

## SMART CITY - AI



**BIG DATA**  
ADVANCED ANALYTICS  
AND VISUALIZATION

COMPUTER SYSTEM

Network System

DATA / CLOUD  
SYSTEM



**AI**  
NVIDIA  
JETSON



SMART CONTAINER



SMART FURNITURE



SOLAR SMART  
FURNITURE



SMART BOX



ADLIS PLATFORM

For more information about our AI NEW GEN Platform contact:

[mori@adlissmart.com](mailto:mori@adlissmart.com)

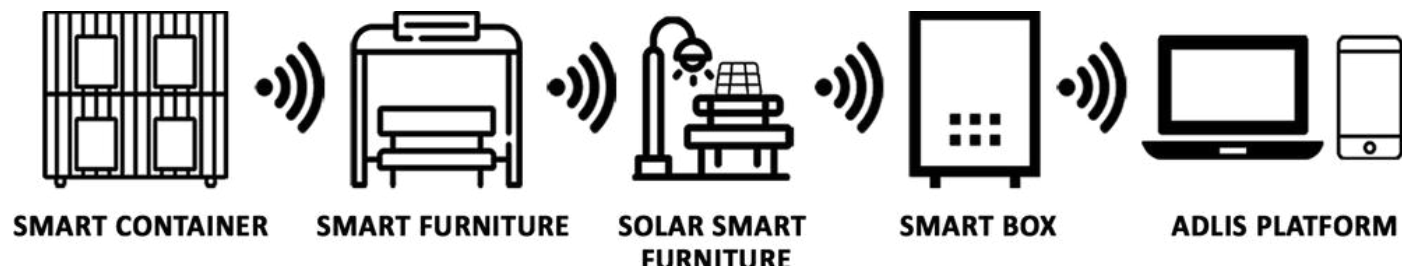
[Office@OpTeamizer.co.il](mailto:Office@OpTeamizer.co.il)





## SOLAR SMART BUS SHELTER

WYS1801	WYS1817A
WYS1803	WYS1818
WYS1804	WYS1819
WYS1805	WYS1821
WYS1806	WYS1822
WYS1807	WYS1823
WYS1808	WYS1825
WYS1810	WYS1826
WYS1811	WYS1826A
WYS1813	WYS1826B
WYS1814	WYS1826C
WYS1815	WYS1827
WYS1816	WYS1828
WYS1817	WYS1829



For more information about our AI NEW GEN Platform contact:  
[mori@adlissmart.com](mailto:mori@adlissmart.com)  
[Office@OpTeamizer.co.il](mailto:Office@OpTeamizer.co.il)

All our products can be customized to the client's request.

- Paint Colors
  - USB
  - wireless
  - Wood color
  - Router
  - Advertising
- And much more.

We can change the standard measurements of our products but it will have an extra cost for the artwork engineer.

### Chief Business Development

Jane Wu

[sales@solarbenchchina.com](mailto:sales@solarbenchchina.com)

0086 13823126631





**Material:** 201 stainless steel + Tempered glass  
**Dimensions:** L4000mm x W1800mm x H2400mm  
**Solar panel:** 420W - **AC POWER IN VERTER: OPTIONAL**  
**Battery type:** Gel battery/LifePO4/Lithium  
**Battery capacity:** 12V / 200AH  
**Controller type:** MPPT  
**USB charging ports:** 2  
**Wireless charging:** 2  
**LED strip light:** warm white/white/RGBW  
**Advertising Display:** 1 LED light box \* 2 window  
**LED screen:** 320\*320mm, 1pc, custom size available  
**OPTION DIGITAL DISPLAY (HYBRID ENERGY)**  
**Bluetooth speaker:** 5/12V  
**4G International router**

## WYS1801

**Standard Components Connected Only with NVIDIA AI JETSON**

- |  |   |
|--|---|
| <ul style="list-style-type: none"> <li>• Sensor Alarm</li> <li>• Motion Sensor</li> <li>• Sensor Temperature</li> <li>• Bluetooth Speaker</li> <li>• USB Charger</li> <li>• Wireless Charger</li> <li>• Solar Panel</li> <li>• MPPT Controller</li> <li>• Led Light</li> <li>• Battery</li> <li>• Router</li> <li>• LED SCREEN</li> <li>• GPS</li> </ul> | <b>Optional:</b> <ul style="list-style-type: none"> <li>• Sensor CO2, .....</li> <li>• Smart Voice Speaker</li> <li>• LED SCREEN</li> <li>• Digital Display</li> <li>• AC-DC Power Inverter</li> <li>• Camera</li> <li>• Cooling System</li> <li>• Trash Compactor Control</li> <li>• Desinfection</li> <li>• Network Notice</li> <li>• Voice broadcast</li> <li>• And More.....</li> </ul> |
|--|---|

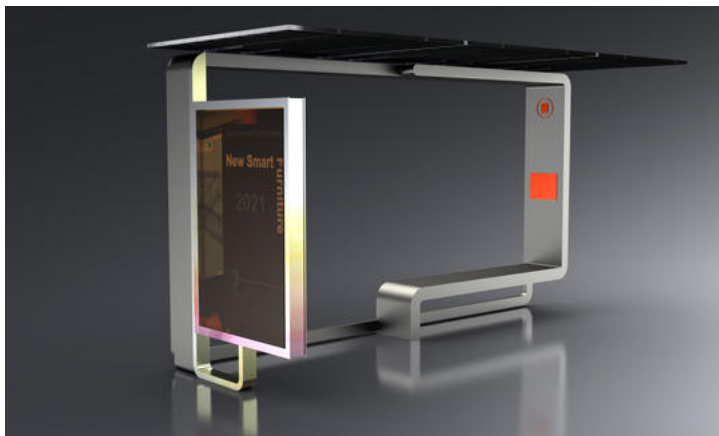


**Material:** Stainless steel #201 + Tempered glass + WPC WOOD  
**Dimensions:** L4000mm x W1800mm x H2400mm  
**Solar panel:** 420W - **AC POWER INVERTER: OPTIONAL**  
**Battery type:** Gel battery/LifePO4/Lithium  
**Battery capacity:** 12V / 200AH  
**Controller type:** MPPT  
**USB charging ports:** 2  
**Wireless charger:** 1  
**LED strip light:** warm white/white/RGBW  
**Advertising Display:** 1 LED light box \* 2 window  
**LED screen:** 320\*800mm, 1pc, custom size available  
**OPTION DIGITAL DISPLAY (HYBRID ENERGY)**  
**Bluetooth speaker:** 5/12V  
**4G International router**

## WYS1803

**Standard Components Connected Only with NVIDIA AI JETSON**

- |  |   |
|--|---|
| <ul style="list-style-type: none"> <li>• Sensor Alarm</li> <li>• Motion Sensor</li> <li>• Sensor Temperature</li> <li>• Bluetooth Speaker</li> <li>• USB Charger</li> <li>• Wireless Charger</li> <li>• Solar Panel</li> <li>• MPPT Controller</li> <li>• Led Light</li> <li>• Battery</li> <li>• Router</li> <li>• LED SCREEN</li> <li>• GPS</li> </ul> | <b>Optional:</b> <ul style="list-style-type: none"> <li>• Sensor CO2, .....</li> <li>• Smart Voice Speaker</li> <li>• LED SCREEN</li> <li>• Digital Display</li> <li>• AC-DC Power Inverter</li> <li>• Camera</li> <li>• Cooling System</li> <li>• Trash Compactor Control</li> <li>• Desinfection</li> <li>• Network Notice</li> <li>• Voice broadcast</li> <li>• And More.....</li> </ul> |
|--|---|

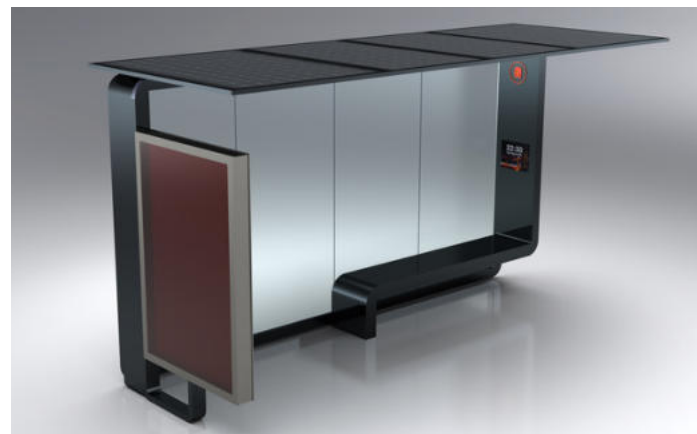


**Material:** 201 stainless steel + Tempered glass  
**Dimensions:** L4000mm x W1800mm x H2400mm  
**Solar panel:** 420W - **AC POWER INVERTER: OPTIONAL**  
**Battery type:** Gel battery/LifePO4/Lithium  
**Battery capacity:** 12V / 200AH  
**Controller type:** MPPT  
**USB charging ports:** 2  
**Wireless charging:** 2  
**LED strip light:** warm white/white/RGBW  
**Advertising Display:** 1 LED light box \* 2 window  
**LED screen:** 320\*320mm, 1pc, custom size available  
**OPTION DIGITAL DISPLAY (HYBRID ENERGY)**  
**Bluetooth speaker:** 5/12V  
**4G International router**

## WYS1802

**Standard Components Connected Only with NVIDIA AI JETSON**

- |  |   |
|--|---|
| <ul style="list-style-type: none"> <li>• Sensor Alarm</li> <li>• Motion Sensor</li> <li>• Sensor Temperature</li> <li>• Bluetooth Speaker</li> <li>• USB Charger</li> <li>• Wireless Charger</li> <li>• Solar Panel</li> <li>• MPPT Controller</li> <li>• Led Light</li> <li>• Battery</li> <li>• Router</li> <li>• LED SCREEN</li> <li>• GPS</li> </ul> | <b>Optional:</b> <ul style="list-style-type: none"> <li>• Sensor CO2, .....</li> <li>• Smart Voice Speaker</li> <li>• LED SCREEN</li> <li>• Digital Display</li> <li>• AC-DC Power Inverter</li> <li>• Camera</li> <li>• Cooling System</li> <li>• Trash Compactor Control</li> <li>• Desinfection</li> <li>• Network Notice</li> <li>• Voice broadcast</li> <li>• And More.....</li> </ul> |
|--|---|



**Material:** Stainless steel #201 + Tempered glass  
**Dimensions:** L4000mm x W1800mm x H2400mm  
**Solar panel:** 420W - **AC POWER INVERTER: OPTIONAL**  
**Battery type:** Gel battery/LifePO4/Lithium  
**Battery capacity:** 12V / 200AH  
**Controller type:** MPPT  
**USB charging ports:** 2  
**Wireless charger:** 2  
**LED strip light:** warm white/white/RGBW  
**Advertising Display:** 1 LED light box \* 2 window  
**OPTION LED SCREEN - DIGITAL DISPLAY (HYBRID ENERGY)**  
**Bluetooth speaker:** 5/12V  
**4G International router**

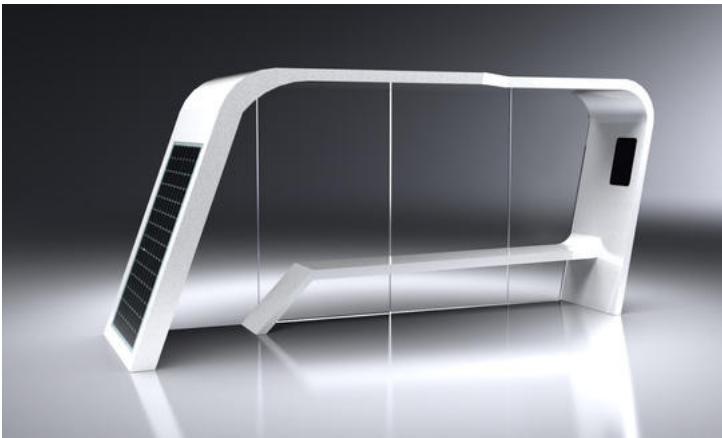
## WYS1804

**Standard Components Connected Only with NVIDIA AI JETSON**

- |  |   |
|--|---|
| <ul style="list-style-type: none"> <li>• Sensor Alarm</li> <li>• Motion Sensor</li> <li>• Sensor Temperature</li> <li>• Bluetooth Speaker</li> <li>• USB Charger</li> <li>• Wireless Charger</li> <li>• Solar Panel</li> <li>• MPPT Controller</li> <li>• Led Light</li> <li>• Battery</li> <li>• Router</li> <li>• LED SCREEN</li> <li>• GPS</li> </ul> | <b>Optional:</b> <ul style="list-style-type: none"> <li>• Sensor CO2, .....</li> <li>• Smart Voice Speaker</li> <li>• LED SCREEN</li> <li>• Digital Display</li> <li>• AC-DC Power Inverter</li> <li>• Camera</li> <li>• Cooling System</li> <li>• Trash Compactor Control</li> <li>• Desinfection</li> <li>• Network Notice</li> <li>• Voice broadcast</li> <li>• And More.....</li> </ul> |
|--|---|



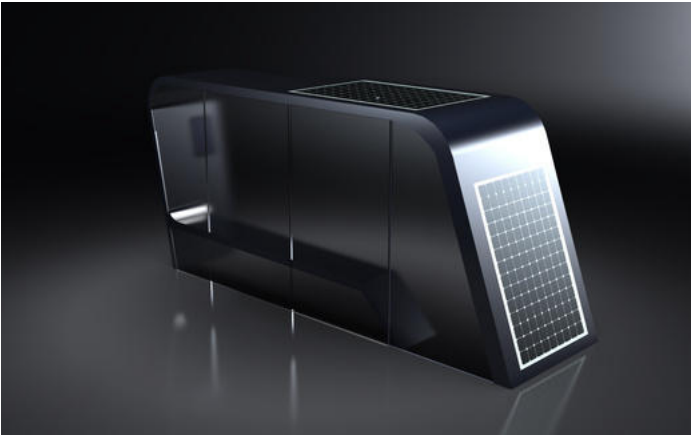




# WYS1805

## Standard Components Connected Only with NVIDIA AI JETSON

- |  |   |
|--|---|
| <ul style="list-style-type: none"> <li>• Sensor Alarm</li> <li>• Motion Sensor</li> <li>• Sensor Temperature</li> <li>• Bluetooth Speaker</li> <li>• USB Charger</li> <li>• Wireless Charger</li> <li>• Solar Panel</li> <li>• MPPT Controller</li> <li>• Led Light</li> <li>• Battery</li> <li>• Router</li> <li>• LED SCREEN</li> <li>• GPS</li> </ul> | <b>Optional:</b> <ul style="list-style-type: none"> <li>• Sensor CO2, .....</li> <li>• Smart Voice Speaker</li> <li>• LED SCREEN</li> <li>• Digital Display</li> <li>• AC-DC Power Inverter</li> <li>• Camera</li> <li>• Cooling System</li> <li>• Trash Compactor Control</li> <li>• Desinfection</li> <li>• Network Notice</li> <li>• Voice broadcast</li> <li>• And More.....</li> </ul> |
|--|---|



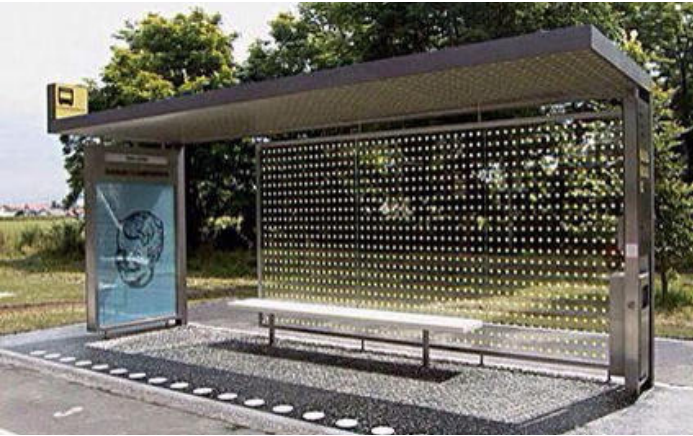
Material: 201 stainless steel + Tempered glass  
 Dimensions: L4500/6000/9000mm x W1600mm x H2400mm  
 Solar panel: 840W - **AC POWER INVERTER: OPTIONAL**  
 Battery type: Gel battery/LifePO4/Lithium  
 Battery capacity: 12V //400AH  
 Controller type: MPPT  
 USB charging ports: 2 + Wireless charging: 2  
 LED strip light: warm white/white/RGBW  
 Advertising Display: 1 LED light box \* 2 window  
 LED screen: 320\*320mm, 1pc, custom size available  
 LED screen: 320\*800mm, 1pc, custom size available  
**OPTION LED SCREEN - DIGITAL DISPLAY (HYBRID ENERGY)**  
 Bluetooth speaker: 5/12V  
 4G International router



# WYS1807

## Standard Components Connected Only with NVIDIA AI JETSON

- |  |   |
|--|---|
| <ul style="list-style-type: none"> <li>• Sensor Alarm</li> <li>• Motion Sensor</li> <li>• Sensor Temperature</li> <li>• Bluetooth Speaker</li> <li>• USB Charger</li> <li>• Wireless Charger</li> <li>• Solar Panel</li> <li>• MPPT Controller</li> <li>• Led Light</li> <li>• Battery</li> <li>• Router</li> <li>• LED SCREEN</li> <li>• GPS</li> </ul> | <b>Optional:</b> <ul style="list-style-type: none"> <li>• Sensor CO2, .....</li> <li>• Smart Voice Speaker</li> <li>• LED SCREEN</li> <li>• Digital Display</li> <li>• AC-DC Power Inverter</li> <li>• Camera</li> <li>• Cooling System</li> <li>• Trash Compactor Control</li> <li>• Desinfection</li> <li>• Network Notice</li> <li>• Voice broadcast</li> <li>• And More.....</li> </ul> |
|--|---|



Material: 201 stainless steel + Tempered glass  
 Dimensions: L4000mm x W1450mm x H2400mm  
 Solar panel: 420W - **AC POWER INVERTER: OPTIONAL**  
 Battery type: Gel battery/LifePO4/Lithium  
 Battery capacity: 12V / 200AH  
 Controller type: MPPT  
 USB charging ports: 2  
 Wireless charging: 2  
 LED strip light: warm white/white/RGBW  
 Advertising Display: 1 LED light box \* 2 window  
**OPTION LED SCREEN - DIGITAL DISPLAY (HYBRID ENERGY)**  
 Bluetooth speaker: 5/12V  
 4G International router



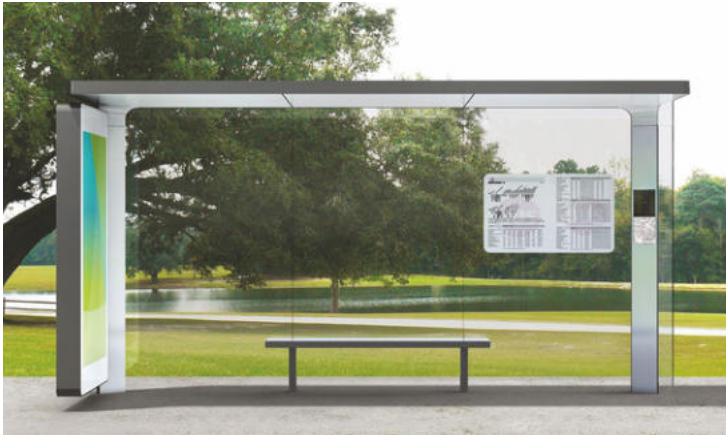
# WYS1806

## Standard Components Connected Only with NVIDIA AI JETSON

- |  |   |
|--|---|
| <ul style="list-style-type: none"> <li>• Sensor Alarm</li> <li>• Motion Sensor</li> <li>• Sensor Temperature</li> <li>• Bluetooth Speaker</li> <li>• USB Charger</li> <li>• Wireless Charger</li> <li>• Solar Panel</li> <li>• MPPT Controller</li> <li>• Led Light</li> <li>• Battery</li> <li>• Router</li> <li>• LED SCREEN</li> <li>• GPS</li> </ul> | <b>Optional:</b> <ul style="list-style-type: none"> <li>• Sensor CO2, .....</li> <li>• Smart Voice Speaker</li> <li>• LED SCREEN</li> <li>• Digital Display</li> <li>• AC-DC Power Inverter</li> <li>• Camera</li> <li>• Cooling System</li> <li>• Trash Compactor Control</li> <li>• Desinfection</li> <li>• Network Notice</li> <li>• Voice broadcast</li> <li>• And More.....</li> </ul> |
|--|---|



Material: 201 stainless steel + Tempered glass  
 Dimensions: L4000mm x W1450mm x H2400mm  
 Solar panel: 420W - **AC POWER INVERTER: OPTIONAL**  
 Battery type: Gel battery/LifePO4/Lithium  
 Battery capacity: 12V / 200AH  
 Controller type: MPPT  
 USB charging ports: 2  
 Wireless charging: 2  
 LED strip light: warm white/white/RGBW  
 Advertising Display: 1 LED light box \* 2 window  
**LED SCREEN - DIGITAL DISPLAY: OPTIONAL**  
 Bluetooth speaker: 5/12V  
 4G International router



# WYS1808

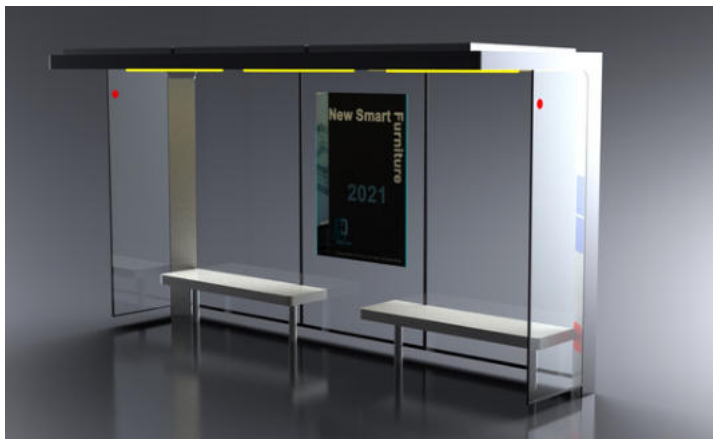
## Standard Components Connected Only with NVIDIA AI JETSON

- |  |   |
|--|---|
| <ul style="list-style-type: none"> <li>• Sensor Alarm</li> <li>• Motion Sensor</li> <li>• Sensor Temperature</li> <li>• Bluetooth Speaker</li> <li>• USB Charger</li> <li>• Wireless Charger</li> <li>• Solar Panel</li> <li>• MPPT Controller</li> <li>• Led Light</li> <li>• Battery</li> <li>• Router</li> <li>• LED SCREEN</li> <li>• GPS</li> </ul> | <b>Optional:</b> <ul style="list-style-type: none"> <li>• Sensor CO2, .....</li> <li>• Smart Voice Speaker</li> <li>• LED SCREEN</li> <li>• Digital Display</li> <li>• AC-DC Power Inverter</li> <li>• Camera</li> <li>• Cooling System</li> <li>• Trash Compactor Control</li> <li>• Desinfection</li> <li>• Network Notice</li> <li>• Voice broadcast</li> <li>• And More.....</li> </ul> |
|--|---|

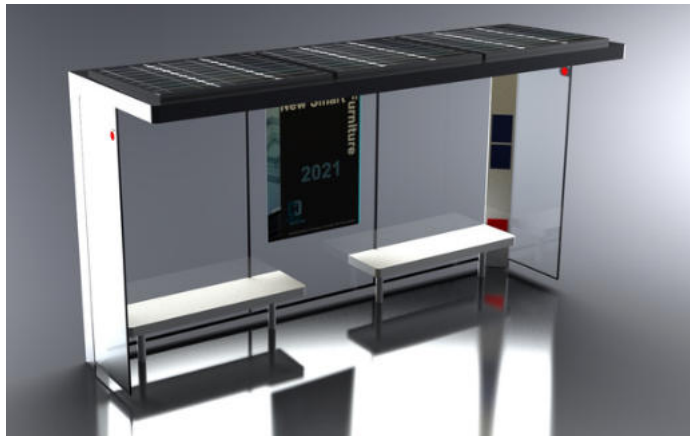


Material: 201 stainless steel + Tempered glass  
 Dimensions: L4000mm x W1600mm x H2400mm  
 Solar panel: 420W - **AC POWER INVERTER: OPTIONAL**  
 Battery type: Gel battery/LifePO4/Lithium  
 Battery capacity: 12V / 200AH  
 Controller type: MPPT  
 USB charging ports: 2  
 Wireless charging: 2  
 LED strip light: warm white/white/RGBW  
 Advertising Display: 1 LED light box \* 2 window  
 LED screen: 320\*320mm, 1pc, custom size available  
**OPTION DIGITAL DISPLAY (HYBRID ENERGY)**  
 Bluetooth speaker: 5/12V  
 4G International router





**Material:** 201 stainless steel + Tempered glass  
**Dimensions:** L: 400cm / W: 160cm / H: 240cm  
**Solar panel:** 420W - **AC POWER INVERTER: OPTIONAL**  
**Battery type:** Gel battery/LifePO4/Lithium  
**Battery capacity:** 12V / 200AH  
**Controller type:** MPPT  
**USB charging ports:** 2  
**Wireless charging:** 2  
**LED Strip Light:** Warm White/White/RGBW  
**Advertising Display:** 1 Poster \* 2 windows  
**LED screen:** 320\*320mm, 2pcs, custom size available  
**OPTION DIGITAL DISPLAY (HYBRID ENERGY)**  
**Bluetooth speaker:** 5/12V  
**4G International router**



## WYS1810

### Standard Components Connected Only with NVIDIA AI JETSON

- |  |   |
|--|---|
| <ul style="list-style-type: none"> <li>• Sensor Alarm</li> <li>• Motion Sensor</li> <li>• Sensor Temperature</li> <li>• Bluetooth Speaker</li> <li>• USB Charger</li> <li>• Wireless Charger</li> <li>• Solar Panel</li> <li>• MPPT Controller</li> <li>• Led Light</li> <li>• Battery</li> <li>• Router</li> <li>• LED SCREEN</li> <li>• GPS</li> </ul> | <b>Optional:</b> <ul style="list-style-type: none"> <li>• Sensor CO2, .....</li> <li>• Smart Voice Speaker</li> <li>• LED SCREEN</li> <li>• Digital Display</li> <li>• AC-DC Power Inverter</li> <li>• Camera</li> <li>• Cooling System</li> <li>• Trash Compactor Control</li> <li>• Desinfection</li> <li>• Network Notice</li> <li>• Voice broadcast</li> <li>• And More.....</li> </ul> |
|--|---|



**Material:** 201 stainless steel + Tempered glass  
**Dimensions:** L: 400cm / W: 160cm / H: 240cm  
**Solar panel:** 420W - **AC POWER INVERTER: OPTIONAL**  
**Battery type:** Gel battery/LifePO4/Lithium  
**Battery capacity:** 12V / 200AH  
**Controller type:** MPPT  
**USB charging ports:** 2  
**Wireless charging:** 2  
**LED Strip Light:** Warm White/White/RGBW  
**Advertising Display:** LED light box - 2 Pcs  
**LED screen:** full color, 1pc, 1600\*320mm  
**OPTION DIGITAL DISPLAY (HYBRID ENERGY)**  
**Bluetooth speaker:** 5/12V  
**4G International router**



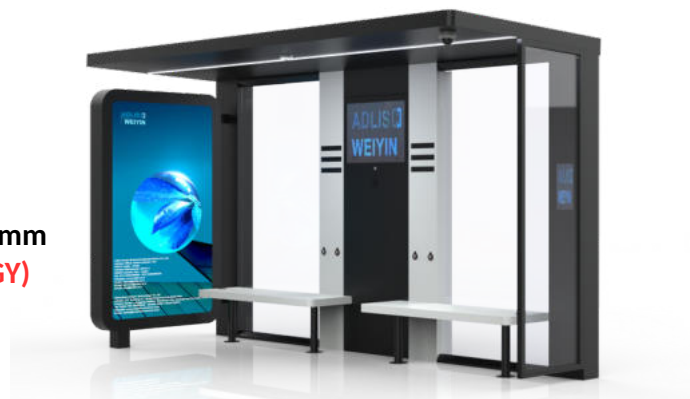
## WYS1812

### Standard Components Connected Only with NVIDIA AI JETSON

- |  |   |
|--|---|
| <ul style="list-style-type: none"> <li>• Sensor Alarm</li> <li>• Motion Sensor</li> <li>• Sensor Temperature</li> <li>• Bluetooth Speaker</li> <li>• USB Charger</li> <li>• Wireless Charger</li> <li>• Solar Panel</li> <li>• MPPT Controller</li> <li>• Led Light</li> <li>• Battery</li> <li>• Router</li> <li>• LED SCREEN</li> <li>• GPS</li> </ul> | <b>Optional:</b> <ul style="list-style-type: none"> <li>• Sensor CO2, .....</li> <li>• Smart Voice Speaker</li> <li>• LED SCREEN</li> <li>• Digital Display</li> <li>• AC-DC Power Inverter</li> <li>• Camera</li> <li>• Cooling System</li> <li>• Trash Compactor Control</li> <li>• Desinfection</li> <li>• Network Notice</li> <li>• Voice broadcast</li> <li>• And More.....</li> </ul> |
|--|---|



**Material:** 201 stainless steel + Tempered glass  
**Dimensions:** L: 400cm / W: 160cm / H: 240cm  
**Solar panel:** 420W - **AC POWER INVERTER: OPTIONAL**  
**Battery type:** Gel battery/LifePO4/Lithium  
**Battery capacity:** 12V / 200AH  
**Controller type:** MPPT  
**USB charging ports:** 2  
**Wireless charging:** 2 units  
**LED Strip Light:** Warm White/White/RGBW  
**Advertising Display:** LED light box - 2 Pcs  
**LED screen:** full color, 1pc, 160\*320mm 1pc, 720\*320mm  
**OPTION LED SCREEN - DIGITAL DISPLAY (HYBRID ENERGY)**  
**Bluetooth speaker:** 5/12V  
**4G International router**



## WYS1811

### Standard Components Connected Only with NVIDIA AI JETSON

- |  |   |
|--|---|
| <ul style="list-style-type: none"> <li>• Sensor Alarm</li> <li>• Motion Sensor</li> <li>• Sensor Temperature</li> <li>• Bluetooth Speaker</li> <li>• USB Charger</li> <li>• Wireless Charger</li> <li>• Solar Panel</li> <li>• MPPT Controller</li> <li>• Led Light</li> <li>• Battery</li> <li>• Router</li> <li>• LED SCREEN</li> <li>• GPS</li> </ul> | <b>Optional:</b> <ul style="list-style-type: none"> <li>• Sensor CO2, .....</li> <li>• Smart Voice Speaker</li> <li>• LED SCREEN</li> <li>• Digital Display</li> <li>• AC-DC Power Inverter</li> <li>• Camera</li> <li>• Cooling System</li> <li>• Trash Compactor Control</li> <li>• Desinfection</li> <li>• Network Notice</li> <li>• Voice broadcast</li> <li>• And More.....</li> </ul> |
|--|---|



**Material:** 201 stainless steel + Tempered glass  
**Dimensions:** L: 400cm / W: 160cm / H: 240cm  
**Solar panel:** 420W - **AC POWER INVERTER: OPTIONAL**  
**Battery type:** Gel battery/LifePO4/Lithium  
**Battery capacity:** 12V / 200AH  
**Controller type:** MPPT  
**USB charging ports:** 2  
**Wireless charging:** 2  
**LED Strip Light:** Warm White/White/RGBW  
**Advertising Display:** LED light box - 2 Pcs  
**OPTION DIGITAL DISPLAY (HYBRID ENERGY)**  
**Bluetooth speaker:** 5/12V  
**4G International router**



## WYS1813

### Standard Components Connected Only with NVIDIA AI JETSON

- |  |   |
|--|---|
| <ul style="list-style-type: none"> <li>• Sensor Alarm</li> <li>• Motion Sensor</li> <li>• Sensor Temperature</li> <li>• Bluetooth Speaker</li> <li>• USB Charger</li> <li>• Wireless Charger</li> <li>• Solar Panel</li> <li>• MPPT Controller</li> <li>• Led Light</li> <li>• Battery</li> <li>• Router</li> <li>• LED SCREEN</li> <li>• GPS</li> </ul> | <b>Optional:</b> <ul style="list-style-type: none"> <li>• Sensor CO2, .....</li> <li>• Smart Voice Speaker</li> <li>• LED SCREEN</li> <li>• Digital Display</li> <li>• AC-DC Power Inverter</li> <li>• Camera</li> <li>• Cooling System</li> <li>• Trash Compactor Control</li> <li>• Desinfection</li> <li>• Network Notice</li> <li>• Voice broadcast</li> <li>• And More.....</li> </ul> |
|--|---|



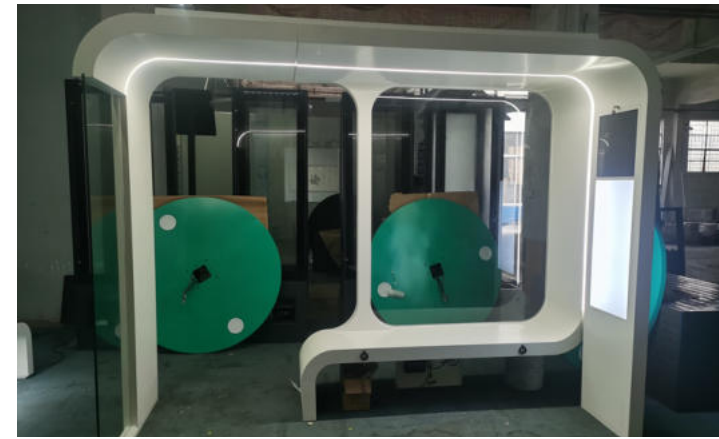


**Material:** 201 stainless steel + Tempered glass  
**Dimensions:** L: 400cm / W: 160cm / H: 240cm  
**Solar panel:** 420W - **AC POWER INVERTER: OPTIONAL**  
**Battery type:** Gel battery/LifePO4/Lithium  
**Battery capacity:** 12V / 200AH  
**Controller type:** MPPT  
**USB charging ports:** 2  
**Wireless charging:** 2  
**LED Strip Light:** Warm White/White/RGBW  
**Advertising Display:** LED light box - 2 Pcs  
**OPTION DIGITAL DISPLAY (HYBRID ENERGY)**  
**Bluetooth speaker:** 5/12V  
**4G International router**

## WYS1814

### Standard Components Connected Only with NVIDIA AI JETSON

- |  |   |
|--|---|
| <ul style="list-style-type: none"> <li>• Sensor Alarm</li> <li>• Motion Sensor</li> <li>• Sensor Temperature</li> <li>• Bluetooth Speaker</li> <li>• USB Charger</li> <li>• Wireless Charger</li> <li>• Solar Panel</li> <li>• MPPT Controller</li> <li>• Led Light</li> <li>• Battery</li> <li>• Router</li> <li>• LED SCREEN</li> <li>• GPS</li> </ul> | <b>Optional:</b> <ul style="list-style-type: none"> <li>• Sensor CO2, .....</li> <li>• Smart Voice Speaker</li> <li>• LED SCREEN</li> <li>• Digital Display</li> <li>• AC-DC Power Inverter</li> <li>• Camera</li> <li>• Cooling System</li> <li>• Trash Compactor Control</li> <li>• Desinfection</li> <li>• Network Notice</li> <li>• Voice broadcast</li> <li>• And More.....</li> </ul> |
|--|---|



**Material:** 201 stainless steel + Tempered glass  
**Dimensions:** L: 300cm / W: 110cm / H: 222cm  
**Solar panel:** 420W - **AC POWER INVERTER: OPTIONAL**  
**Battery type:** Gel battery/LifePO4/Lithium  
**Battery capacity:** 12V / 220AH  
**Controller type:** MPPT  
**USB charging ports:** 2  
**Wireless charging:** 0  
**LED Strip Light:** Warm White/White/RGBW  
**Advertising Display:** LED light box - 2 Pcs  
**Led screen:** Full color. 384\*384mm - 2 Pcs  
**OPTION DIGITAL DISPLAY (HYBRID ENERGY)**  
**Bluetooth speaker:** 5/12V  
**4G International router**

## WYS1816

### Standard Components Connected Only with NVIDIA AI JETSON

- |  |   |
|--|---|
| <ul style="list-style-type: none"> <li>• Sensor Alarm</li> <li>• Motion Sensor</li> <li>• Sensor Temperature</li> <li>• Bluetooth Speaker</li> <li>• USB Charger</li> <li>• Wireless Charger</li> <li>• Solar Panel</li> <li>• MPPT Controller</li> <li>• Led Light</li> <li>• Battery</li> <li>• Router</li> <li>• LED SCREEN</li> <li>• GPS</li> </ul> | <b>Optional:</b> <ul style="list-style-type: none"> <li>• Sensor CO2, .....</li> <li>• Smart Voice Speaker</li> <li>• LED SCREEN</li> <li>• Digital Display</li> <li>• AC-DC Power Inverter</li> <li>• Camera</li> <li>• Cooling System</li> <li>• Trash Compactor Control</li> <li>• Desinfection</li> <li>• Network Notice</li> <li>• Voice broadcast</li> <li>• And More.....</li> </ul> |
|--|---|



**Material:** 201 stainless steel + Tempered glass  
**Dimensions:** L: 400cm / W: 160cm / H: 240cm  
**Solar panel:** 420W - **AC POWER INVERTER: OPTIONAL**  
**Battery type:** Gel battery/LifePO4/Lithium  
**Battery capacity:** 12V / 200AH  
**Controller type:** MPPT  
**USB charging ports:** 2  
**Wireless charging:** 0 units  
**LED Strip Light:** Warm White/White/RGBW  
**2 Posters \* 2 windows**  
**Advertising Display:** LED light box - 1 Pc  
**OPTION DIGITAL DISPLAY (HYBRID ENERGY)**  
**Bluetooth speaker:** 5/12V  
**4G International router**

## WYS1815

### Standard Components Connected Only with NVIDIA AI JETSON

- |  |   |
|--|---|
| <ul style="list-style-type: none"> <li>• Sensor Alarm</li> <li>• Motion Sensor</li> <li>• Sensor Temperature</li> <li>• Bluetooth Speaker</li> <li>• USB Charger</li> <li>• Wireless Charger</li> <li>• Solar Panel</li> <li>• MPPT Controller</li> <li>• Led Light</li> <li>• Battery</li> <li>• Router</li> <li>• LED SCREEN</li> <li>• GPS</li> </ul> | <b>Optional:</b> <ul style="list-style-type: none"> <li>• Sensor CO2, .....</li> <li>• Smart Voice Speaker</li> <li>• LED SCREEN</li> <li>• Digital Display</li> <li>• AC-DC Power Inverter</li> <li>• Camera</li> <li>• Cooling System</li> <li>• Trash Compactor Control</li> <li>• Desinfection</li> <li>• Network Notice</li> <li>• Voice broadcast</li> <li>• And More.....</li> </ul> |
|--|---|



**Material:** 201 stainless steel + Tempered glass  
**Dimensions:** L: 400cm / W: 110cm / H: 222cm  
**Solar panel:** 420W - **AC POWER INVERTER: OPTIONAL**  
**Battery type:** Gel battery/LifePO4/Lithium  
**Battery capacity:** 12V / 200AH  
**Controller type:** MPPT  
**USB charging ports:** 2  
**Wireless charging:** 0 units  
**LED Strip Light:** Warm White/White/RGBW  
**Advertising display:** 1 LED light box \* 2 window  
**LED screen:** full color, 1pc, 320\*800mm  
**OPTION DIGITAL DISPLAY (HYBRID ENERGY)**  
**Bluetooth speaker:** 5/12V  
**4G International router**

## WYS1817

### Standard Components Connected Only with NVIDIA AI JETSON

- |  |   |
|--|---|
| <ul style="list-style-type: none"> <li>• Sensor Alarm</li> <li>• Motion Sensor</li> <li>• Sensor Temperature</li> <li>• Bluetooth Speaker</li> <li>• USB Charger</li> <li>• Wireless Charger</li> <li>• Solar Panel</li> <li>• MPPT Controller</li> <li>• Led Light</li> <li>• Battery</li> <li>• Router</li> <li>• LED SCREEN</li> <li>• GPS</li> </ul> | <b>Optional:</b> <ul style="list-style-type: none"> <li>• Sensor CO2, .....</li> <li>• Smart Voice Speaker</li> <li>• LED SCREEN</li> <li>• Digital Display</li> <li>• AC-DC Power Inverter</li> <li>• Camera</li> <li>• Cooling System</li> <li>• Trash Compactor Control</li> <li>• Desinfection</li> <li>• Network Notice</li> <li>• Voice broadcast</li> <li>• And More.....</li> </ul> |
|--|---|







# WYS1817A

## Standard Components Connected Only with NVIDIA AI JETSON

- |  |   |
|--|---|
| <ul style="list-style-type: none"> <li>• Sensor Alarm</li> <li>• Motion Sensor</li> <li>• Sensor Temperature</li> <li>• Bluetooth Speaker</li> <li>• USB Charger</li> <li>• Wireless Charger</li> <li>• Solar Panel</li> <li>• MPPT Controller</li> <li>• Led Light</li> <li>• Battery</li> <li>• Router</li> <li>• LED SCREEN</li> <li>• GPS</li> </ul> | <b>Optional:</b> <ul style="list-style-type: none"> <li>• Sensor CO2, .....</li> <li>• Smart Voice Speaker</li> <li>• LED SCREEN</li> <li>• Digital Display</li> <li>• AC-DC Power Inverter</li> <li>• Camera</li> <li>• Cooling System</li> <li>• Trash Compactor Control</li> <li>• Desinfection</li> <li>• Network Notice</li> <li>• Voice broadcast</li> <li>• And More.....</li> </ul> |
|--|---|

**Material:** 201 stainless steel + Tempered glass + WPC WOOD

**Dimensions:** L: 400cm / W: 110cm / H: 222cm

**Solar panel:** 420W - **AC POWER INVERTER: OPTIONAL**

**Battery type:** Gel battery/LifePO4/Lithium

**Battery capacity:** 12V / 200AH

**Controller type:** MPPT

**USB charging ports:** 2

**Wireless charging:** 2

**LED Strip Light:** Warm White/White/RGBW

**Advertising display:** 1 LED light box \* 2 window

**LED screen:** full color, 1pc,320\*800mm

**OPTION DIGITAL DISPLAY (HYBRID ENERGY)**

**Bluetooth speaker:** 5/12V

**4G International router**



# WYS1819

## Standard Components Connected Only with NVIDIA AI JETSON

- |  |   |
|--|---|
| <ul style="list-style-type: none"> <li>• Sensor Alarm</li> <li>• Motion Sensor</li> <li>• Sensor Temperature</li> <li>• Bluetooth Speaker</li> <li>• USB Charger</li> <li>• Wireless Charger</li> <li>• Solar Panel</li> <li>• MPPT Controller</li> <li>• Led Light</li> <li>• Battery</li> <li>• Router</li> <li>• LED SCREEN</li> <li>• GPS</li> </ul> | <b>Optional:</b> <ul style="list-style-type: none"> <li>• Sensor CO2, .....</li> <li>• Smart Voice Speaker</li> <li>• LED SCREEN</li> <li>• Digital Display</li> <li>• AC-DC Power Inverter</li> <li>• Camera</li> <li>• Cooling System</li> <li>• Trash Compactor Control</li> <li>• Desinfection</li> <li>• Network Notice</li> <li>• Voice broadcast</li> <li>• And More.....</li> </ul> |
|--|---|

**Material:** 201 stainless steel + Tempered glass

**Dimensions:** L: 800cm / W: 110cm / H: 222cm

**Solar panel:** 840W - **AC POWER INVERTER: OPTIONAL**

**AC POWER INVERTER:** Optional

**Battery type:** Gel battery/LifePO4/Lithium

**Battery capacity:** 12V / 300AH

**Controller type:** MPPT

**USB charging ports:** 4

**Wireless charging:** 0

**LED Strip Light:** Warm White/White/RGBW

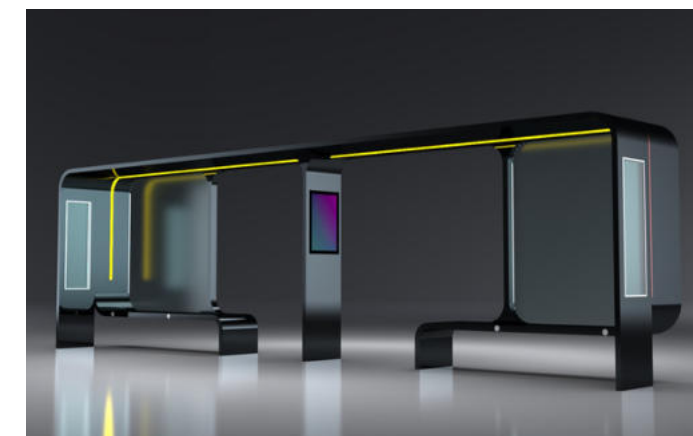
**Advertising display:** 2 LED light box \* 2 window

**LED screen:** full color, 2pcs, 320\*640mm

**OPTION DIGITAL DISPLAY (HYBRID ENERGY)**

**Bluetooth speaker:** 5/12V

**4G International router**



# WYS1818

## Standard Components Connected Only with NVIDIA AI JETSON

- |  |   |
|--|---|
| <ul style="list-style-type: none"> <li>• Sensor Alarm</li> <li>• Motion Sensor</li> <li>• Sensor Temperature</li> <li>• Bluetooth Speaker</li> <li>• USB Charger</li> <li>• Wireless Charger</li> <li>• Solar Panel</li> <li>• MPPT Controller</li> <li>• Led Light</li> <li>• Battery</li> <li>• Router</li> <li>• LED SCREEN</li> <li>• GPS</li> </ul> | <b>Optional:</b> <ul style="list-style-type: none"> <li>• Sensor CO2, .....</li> <li>• Smart Voice Speaker</li> <li>• LED SCREEN</li> <li>• Digital Display</li> <li>• AC-DC Power Inverter</li> <li>• Camera</li> <li>• Cooling System</li> <li>• Trash Compactor Control</li> <li>• Desinfection</li> <li>• Network Notice</li> <li>• Voice broadcast</li> <li>• And More.....</li> </ul> |
|--|---|

**Material:** 201 stainless steel + Tempered glass

**Dimensions:** L: 600cm / W: 110cm / H: 222cm

**Solar panel:** 840W - **AC POWER INVERTER: OPTIONAL**

**Battery type:** Gel battery/LifePO4/Lithium

**Battery capacity:** 12V / 300AH

**Controller type:** MPPT

**USB charging ports:** 4

**Wireless charging:** 4

**LED Strip Light:** Warm White/White/RGBW

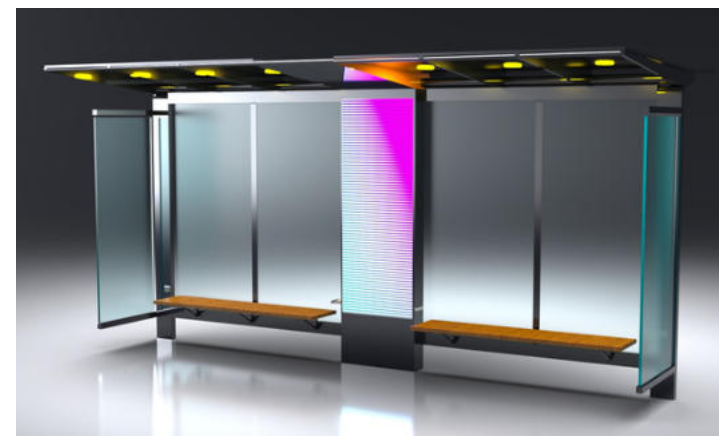
**Advertising display:** 1 LED light box \* 2 window

**LED screen:** full color, 1pc,320\*800mm

**OPTION DIGITAL DISPLAY (HYBRID ENERGY)**

**Bluetooth speaker:** 5/12V

**4G International router**



# WYS1821

## Standard Components Connected Only with NVIDIA AI JETSON

- |  |   |
|--|---|
| <ul style="list-style-type: none"> <li>• Sensor Alarm</li> <li>• Motion Sensor</li> <li>• Sensor Temperature</li> <li>• Bluetooth Speaker</li> <li>• USB Charger</li> <li>• Wireless Charger</li> <li>• Solar Panel</li> <li>• MPPT Controller</li> <li>• Led Light</li> <li>• Battery</li> <li>• Router</li> <li>• LED SCREEN</li> <li>• GPS</li> </ul> | <b>Optional:</b> <ul style="list-style-type: none"> <li>• Sensor CO2, .....</li> <li>• Smart Voice Speaker</li> <li>• LED SCREEN</li> <li>• Digital Display</li> <li>• AC-DC Power Inverter</li> <li>• Camera</li> <li>• Cooling System</li> <li>• Trash Compactor Control</li> <li>• Desinfection</li> <li>• Network Notice</li> <li>• Voice broadcast</li> <li>• And More.....</li> </ul> |
|--|---|

**Material:** 201 stainless steel + Tempered glass

**Dimensions:** L: 480cm / W: 150cm / H: 248cm

**Solar panel:** 420W - **AC POWER INVERTER: OPTIONAL**

**AC POWER INVERTER:** Optional

**Battery type:** Gel battery/LifePO4/Lithium

**Battery capacity:** 12V / 200AH

**Controller type:** MPPT

**USB charging ports:** 2

**Wireless charging:** 2

**LED Spot Light:** Warm White/White/RGBW

**LED screen:** full color, 1pc, 320\*800mm

**640\*1600MM OPTIONAL**

**OPTION DIGITAL DISPLAY (HYBRID ENERGY)**

**Bluetooth speaker:** 5/12V

**4G International router**







**Material:** 201 stainless steel + Tempered glass  
**Dimensions:** L: 300/400cm / W: 180cm / H: 253cm  
**Size bench:** 200 \* 420\*420/700  
**Solar panel:** 200W/300W/420W  
**AC POWER INVERTER: OPTIONAL**  
**Battery type:** Gel battery/LifePO4/Lithium  
**Battery capacity:** 12V/110AH/200AH  
**Controller type:** MPPT  
**USB charging ports:** 2  
**Wireless charging:** 0  
**LED Spot Light:** Warm White/White/RGBW  
**Advertising display:** poster in front  
**LED LIGHT BOX\*2 WINDOWS/LED SCREEN OPTION**  
**Bluetooth speaker:** 5/12V  
**4G International router**

## WYC1822

### Standard Components Connected Only with NVIDIA AI JETSON

- |  |   |
|--|---|
| <ul style="list-style-type: none"> <li>• Sensor Alarm</li> <li>• Motion Sensor</li> <li>• Sensor Temperature</li> <li>• Bluetooth Speaker</li> <li>• USB Charger</li> <li>• Wireless Charger</li> <li>• Solar Panel</li> <li>• MPPT Controller</li> <li>• Led Light</li> <li>• Battery</li> <li>• Router</li> <li>• LED SCREEN</li> <li>• GPS</li> </ul> | <b>Optional:</b> <ul style="list-style-type: none"> <li>• Sensor CO2, .....</li> <li>• Smart Voice Speaker</li> <li>• LED SCREEN</li> <li>• Digital Display</li> <li>• AC-DC Power Inverter</li> <li>• Camera</li> <li>• Cooling System</li> <li>• Trash Compactor Control</li> <li>• Desinfection</li> <li>• Network Notice</li> <li>• Voice broadcast</li> <li>• And More.....</li> </ul> |
|--|---|

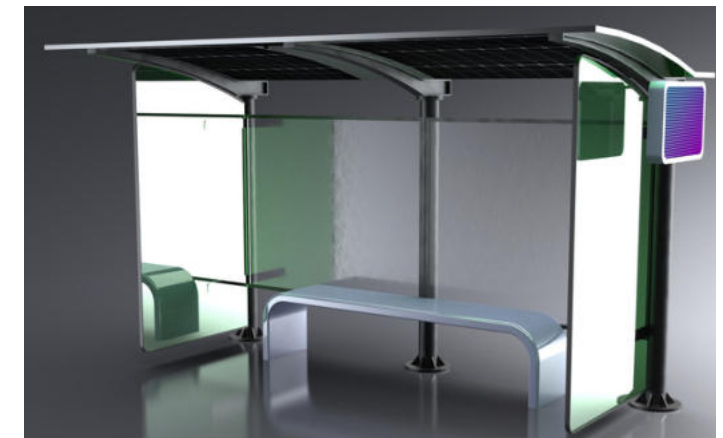


**Material:** 201 stainless steel + Tempered glass  
**Dimensions:** L: 400cm / W: 140cm / H: 240cm  
**Solar panel:** 420W - **AC POWER INVERTER: OPTIONAL**  
**Battery type:** Gel battery/LifePO4/Lithium  
**Battery capacity:** 12V / 200AH  
**Controller type:** MPPT  
**USB charging ports:** 2  
**Wireless charging:** 2  
**LED Strip Light:** Warm White/White/RGBW  
**Advertising display:** 1 LED light box \* 2 window  
**LED screen:** full color, 1pc, 640\*320mm  
**OPTION DIGITAL DISPLAY (HYBRID ENERGY)**  
**Bluetooth speaker:** 5/12V  
**4G International router**

## WYS1825

### Standard Components Connected Only with NVIDIA AI JETSON

- |  |   |
|--|---|
| <ul style="list-style-type: none"> <li>• Sensor Alarm</li> <li>• Motion Sensor</li> <li>• Sensor Temperature</li> <li>• Bluetooth Speaker</li> <li>• USB Charger</li> <li>• Wireless Charger</li> <li>• Solar Panel</li> <li>• MPPT Controller</li> <li>• Led Light</li> <li>• Battery</li> <li>• Router</li> <li>• LED SCREEN</li> <li>• GPS</li> </ul> | <b>Optional:</b> <ul style="list-style-type: none"> <li>• Sensor CO2, .....</li> <li>• Smart Voice Speaker</li> <li>• LED SCREEN</li> <li>• Digital Display</li> <li>• AC-DC Power Inverter</li> <li>• Camera</li> <li>• Cooling System</li> <li>• Trash Compactor Control</li> <li>• Desinfection</li> <li>• Network Notice</li> <li>• Voice broadcast</li> <li>• And More.....</li> </ul> |
|--|---|

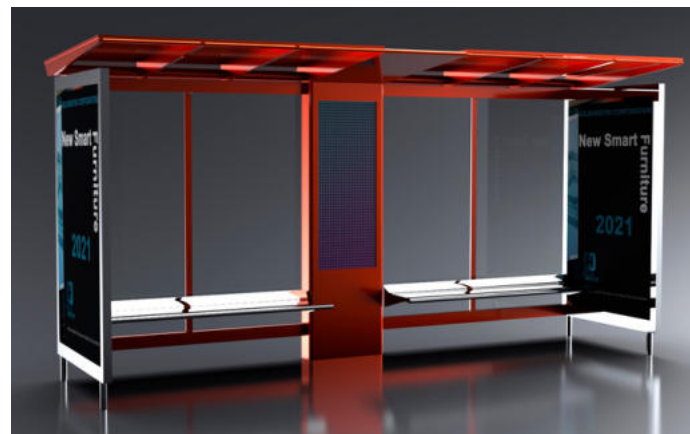


**Material:** 201 stainless steel + Tempered glass  
**Dimensions:** L: 480cm / W: 150cm / H: 248cm  
**Solar panel:** 420W - **AC POWER INVERTER: OPTIONAL**  
**Battery type:** Gel battery/LifePO4/Lithium  
**Battery capacity:** 12V / 200AH  
**Controller type:** MPPT  
**USB charging ports:** 2  
**Wireless charging:** 2  
**LED Strip Light:** Warm White/White/RGBW  
**Advertising display:** 2 LED light box \* 2 window  
**LED screen:** full color, 1pc, 320\*800mm  
**640\*1600MM OPTIONAL**  
**Bluetooth speaker:** 5/12V  
**4G International router**

## WYS1823

### Standard Components Connected Only with NVIDIA AI JETSON

- |  |   |
|--|---|
| <ul style="list-style-type: none"> <li>• Sensor Alarm</li> <li>• Motion Sensor</li> <li>• Sensor Temperature</li> <li>• Bluetooth Speaker</li> <li>• USB Charger</li> <li>• Wireless Charger</li> <li>• Solar Panel</li> <li>• MPPT Controller</li> <li>• Led Light</li> <li>• Battery</li> <li>• Router</li> <li>• LED SCREEN</li> <li>• GPS</li> </ul> | <b>Optional:</b> <ul style="list-style-type: none"> <li>• Sensor CO2, .....</li> <li>• Smart Voice Speaker</li> <li>• LED SCREEN</li> <li>• Digital Display</li> <li>• AC-DC Power Inverter</li> <li>• Camera</li> <li>• Cooling System</li> <li>• Trash Compactor Control</li> <li>• Desinfection</li> <li>• Network Notice</li> <li>• Voice broadcast</li> <li>• And More.....</li> </ul> |
|--|---|

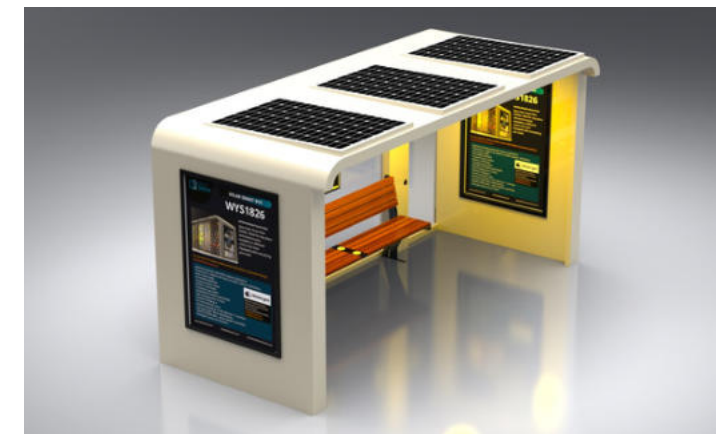


**Material:** 201 stainless steel + Tempered glass  
**Dimensions:** L: 400cm / W: 150cm / H: 230cm  
**Solar panel:** 420W - **AC POWER INVERTER: OPTIONAL**  
**Battery type:** Gel battery/LifePO4/Lithium  
**Battery capacity:** 12V / 200AH  
**Controller type:** MPPT  
**USB charging ports:** 4  
**Wireless charging:** 2  
**LED Strip Light:** Warm White/White/RGBW  
**Advertising Display:** LED light box - 2 Pcs + 1 Poster  
**LED SCREEN - DIGITAL DISPLAY: OPTIONAL**  
**Bluetooth speaker:** 5/12V  
**4G International router**

## WYS1826

### Standard Components Connected Only with NVIDIA AI JETSON

- |  |   |
|--|---|
| <ul style="list-style-type: none"> <li>• Sensor Alarm</li> <li>• Motion Sensor</li> <li>• Sensor Temperature</li> <li>• Bluetooth Speaker</li> <li>• USB Charger</li> <li>• Wireless Charger</li> <li>• Solar Panel</li> <li>• MPPT Controller</li> <li>• Led Light</li> <li>• Battery</li> <li>• Router</li> <li>• LED SCREEN</li> <li>• GPS</li> </ul> | <b>Optional:</b> <ul style="list-style-type: none"> <li>• Sensor CO2, .....</li> <li>• Smart Voice Speaker</li> <li>• LED SCREEN</li> <li>• Digital Display</li> <li>• AC-DC Power Inverter</li> <li>• Camera</li> <li>• Cooling System</li> <li>• Trash Compactor Control</li> <li>• Desinfection</li> <li>• Network Notice</li> <li>• Voice broadcast</li> <li>• And More.....</li> </ul> |
|--|---|







**Material:** 201 stainless steel + Tempered glass  
**FRONT GLASS WIND-RAIN-SNOW PROTECTION**  
**Dimensions:** L: 400cm / W: 150cm / H: 230cm  
**Solar panel:** 420W - **AC POWER INVERTER: OPTIONAL**  
**Battery type:** Gel battery/LifePO4/Lithium  
**Battery capacity:** 12V / 200AH  
**Controller type:** MPPT  
**USB charging ports:** 4  
**Wireless charging:** 2  
**LED Strip Light:** Warm White/White/RGBW  
**Advertising Display:** LED light box - 2 Pcs + 1 Poster  
**LED SCREEN - DIGITAL DISPLAY: OPTIONAL**  
**Bluetooth speaker:** 5/12V  
**4G International router**

## WYS1826A

**Standard Components Connected Only with NVIDIA AI JETSON**

- |  |   |
|--|---|
| <ul style="list-style-type: none"> <li>• Sensor Alarm</li> <li>• Motion Sensor</li> <li>• Sensor Temperature</li> <li>• Bluetooth Speaker</li> <li>• USB Charger</li> <li>• Wireless Charger</li> <li>• Solar Panel</li> <li>• MPPT Controller</li> <li>• Led Light</li> <li>• Battery</li> <li>• Router</li> <li>• LED SCREEN</li> <li>• GPS</li> </ul> | <b>Optional:</b> <ul style="list-style-type: none"> <li>• Sensor CO2, .....</li> <li>• Smart Voice Speaker</li> <li>• LED SCREEN</li> <li>• Digital Display</li> <li>• AC-DC Power Inverter</li> <li>• Camera</li> <li>• Cooling System</li> <li>• Trash Compactor Control</li> <li>• Desinfection</li> <li>• Network Notice</li> <li>• Voice broadcast</li> <li>• And More.....</li> </ul> |
|--|---|

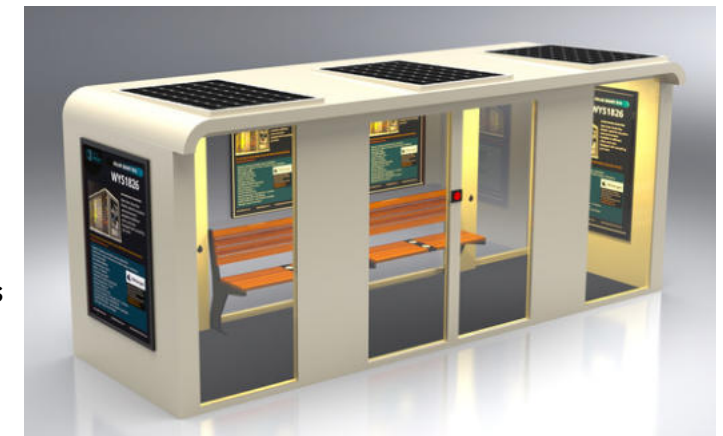


**Material:** 201 stainless steel + Tempered glass  
**Dimensions:** L: 600cm / W: 150cm / H: 230cm  
**Solar panel:** 420W  
**AC POWER INVERTER:** Optional  
**Battery type:** Gel battery/LifePO4/Lithium  
**Battery capacity:** 12V / 200AH  
**Controller type:** MPPT  
**USB charging ports:** 2  
**Wireless charging:** 0  
**LED Strip Light:** Warm White/White/RGBW  
**Advertising Display:** LED light box - 2 Pcs + 2 Posters  
**LED SCREEN - DIGITAL DISPLAY: OPTIONAL**  
**Bluetooth speaker:** 5/12V  
**4G International router**

## WYS1826C

**Standard Components Connected Only with NVIDIA AI JETSON**

- |  |   |
|--|---|
| <ul style="list-style-type: none"> <li>• Sensor Alarm</li> <li>• Motion Sensor</li> <li>• Sensor Temperature</li> <li>• Bluetooth Speaker</li> <li>• USB Charger</li> <li>• Wireless Charger</li> <li>• Solar Panel</li> <li>• MPPT Controller</li> <li>• Led Light</li> <li>• Battery</li> <li>• Router</li> <li>• LED SCREEN</li> <li>• GPS</li> </ul> | <b>Optional:</b> <ul style="list-style-type: none"> <li>• Sensor CO2, .....</li> <li>• Smart Voice Speaker</li> <li>• LED SCREEN</li> <li>• Digital Display</li> <li>• AC-DC Power Inverter</li> <li>• Camera</li> <li>• Cooling System</li> <li>• Trash Compactor Control</li> <li>• Desinfection</li> <li>• Network Notice</li> <li>• Voice broadcast</li> <li>• And More.....</li> </ul> |
|--|---|



**Material:** 201 stainless steel + Tempered glass  
**AUTOMATIC DOOR + AIR CONDITION SYSTEM**  
**Dimensions:** L: 400cm / W: 150cm / H: 230cm  
**Solar panel:** 840W - **AC POWER INVERTER: OPTIONAL**  
**Battery type:** Gel battery/LifePO4/Lithium  
**Battery capacity:** 12V / 300AH  
**Controller type:** MPPT  
**USB charging ports:** 4  
**Wireless charging:** 2  
**LED Strip Light:** Warm White/White/RGBW  
**Advertising Display:** LED light box - 2 Pcs + 1 Poster  
**LED SCREEN - DIGITAL DISPLAY: OPTIONAL**  
**Bluetooth speaker:** 5/12V  
**4G International router**

## WYS1826B

**Standard Components Connected Only with NVIDIA AI JETSON**

- |  |   |
|--|---|
| <ul style="list-style-type: none"> <li>• Sensor Alarm</li> <li>• Motion Sensor</li> <li>• Sensor Temperature</li> <li>• Bluetooth Speaker</li> <li>• USB Charger</li> <li>• Wireless Charger</li> <li>• Solar Panel</li> <li>• MPPT Controller</li> <li>• Led Light</li> <li>• Battery</li> <li>• Router</li> <li>• LED SCREEN</li> <li>• GPS</li> </ul> | <b>Optional:</b> <ul style="list-style-type: none"> <li>• Sensor CO2, .....</li> <li>• Smart Voice Speaker</li> <li>• LED SCREEN</li> <li>• Digital Display</li> <li>• AC-DC Power Inverter</li> <li>• Camera</li> <li>• Cooling System</li> <li>• Trash Compactor Control</li> <li>• Desinfection</li> <li>• Network Notice</li> <li>• Voice broadcast</li> <li>• And More.....</li> </ul> |
|--|---|



**Size:** L5750mm x W1850mm x H2500mm  
**Material:** Stainless steel #201 + Tempered glass  
**AC POWER**  
**Advertising Display:** 2pcs LED light box \* double windows  
**LED screen:** 1pc, P5  
**Led Strip light**  
**4G International WiFi router**

**SOLAR PANEL OPTIONAL**  
**DIGITAL SCREEN OPTIONAL**  
**WIRELESS CHARGER OPTIONAL**  
**MONITORING CAMERA OPTIONAL**

## WYS1829

**Standard Components Connected Only with NVIDIA AI JETSON**

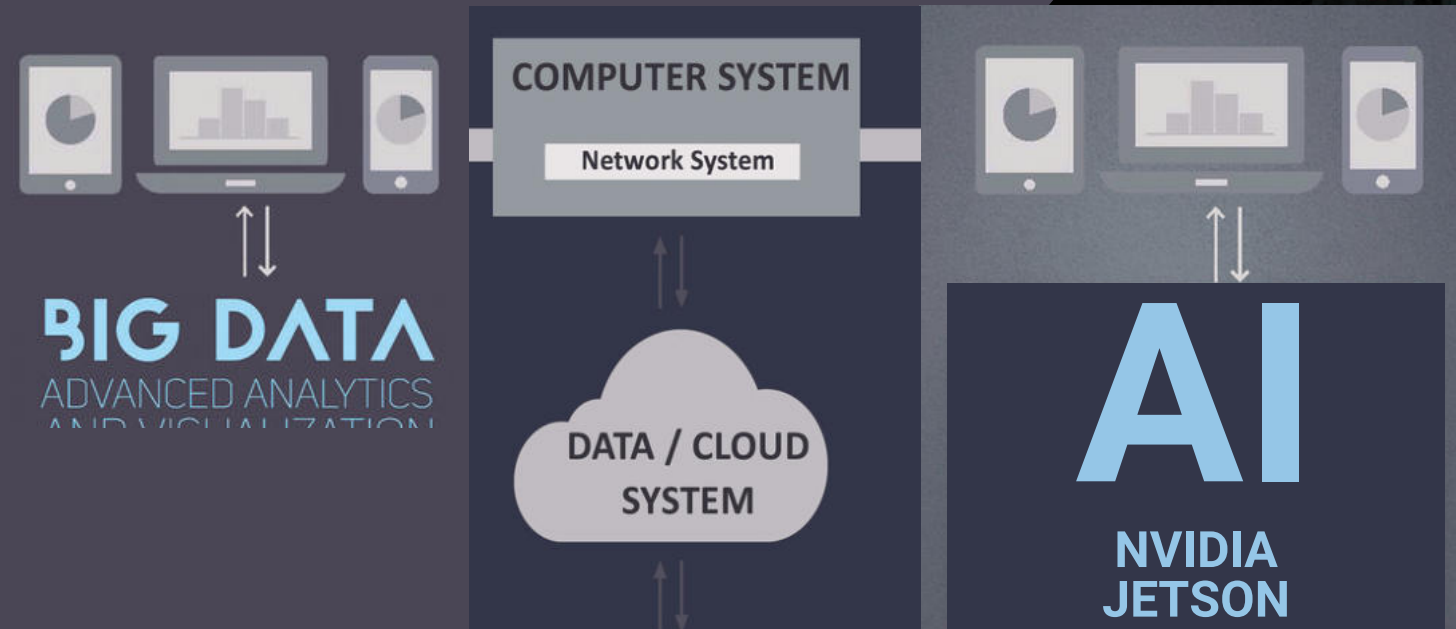
- |  |   |
|--|---|
| <ul style="list-style-type: none"> <li>• Sensor Alarm</li> <li>• Motion Sensor</li> <li>• Sensor Temperature</li> <li>• Bluetooth Speaker</li> <li>• USB Charger</li> <li>• Wireless Charger</li> <li>• Solar Panel</li> <li>• MPPT Controller</li> <li>• Led Light</li> <li>• Battery</li> <li>• Router</li> <li>• LED SCREEN</li> <li>• GPS</li> </ul> | <b>Optional:</b> <ul style="list-style-type: none"> <li>• Sensor CO2, .....</li> <li>• Smart Voice Speaker</li> <li>• LED SCREEN</li> <li>• Digital Display</li> <li>• AC-DC Power Inverter</li> <li>• Camera</li> <li>• Cooling System</li> <li>• Trash Compactor Control</li> <li>• Desinfection</li> <li>• Network Notice</li> <li>• Voice broadcast</li> <li>• And More.....</li> </ul> |
|--|---|





# SMART CITY INTEGRATED MANAGEMENT SYSTEM

SMART CITY - AI



## Components Connected with NVIDIA AI JETSON

### Our Standard Platform

- Sensor Alarm
- Motion Sensor
- Sensor Temperature
- Bluetooth Speaker
- USB Charger
- Wireless Charger
- Solar Panel
- MPPT Controller
- Led Light / Intensity - ON/OFF
- Timing Schedule
- Battery
- Router
- LED SCREEN
- GPS

## Components Connected with NVIDIA AI JETSON

### Optional:

- Sensor CO2
- Sensor Waterproof
- Sensor Humidity
- Sensor Wind Speed
- Sensor Wind Direction
- Sensor Atmospheric Pressure
- Sensor Noise
- Sensor Filled Alarm
- Sensor PM10 - PM2.5
- Sensor Bin Automatic Door
- Sensor Bin Capacity
- Sensor + Laser People Counters
- Trash Compactor Control
- Desinfection
- Network Notice
- Smart Voice
- Voice broadcast
- Digital Display
- AC-DC Power Inverter
- Camera
- Cooling System

# ADLIS SMART CITY INTEGRATED MANAGEMENT SYSTEM

## ADLIS CLOUD PLATFORM

Each of our products can be configured with different options. With our Hardware-Software combined with NVIDIA AI JETSON BOX allows us all possible options for total Smart City

### BASIC PLATFORM

Licences Prices Month  
Prices Cloud Month  
1 to 200 JETSON BOX Connected

### PREMIUM PLATFORM

Licences Prices Month  
Prices Cloud Month  
200 to 1000 JETSON BOX Connected

### FULL PLATFORM

Licences Prices Year  
Special Cloud Prices  
Full JETSON BOX Connected

## ADLIS HOSTING SERVER

Each NVIDIA AI JETSON BOX connected to our products is configured separately. We configure the JETSON BOX with a different protocol for each product. The configuration has an additional cost that is paid once. The cost depend on the configuration and components.

### BASIC PLATFORM

Server Prices Year  
Adlissmart Domain  
www.adlissmart.com-Name  
1 to 200 JETSON BOX Connected

### PREMIUM PLATFORM

Server Prices Year  
Adlissmart SubDomain  
www.Name/adlissmart.com  
1 to 200 JETSON BOX Connected

### FULL PLATFORM

Server Prices Year  
Private Domain  
www.DomainName.com  
Full JETSON BOX Connected

## ADLIS SMART DATA

We manufacture the chosen Model and connect one NVIDIA AI JETSON BOX. We configure the JETSON BOX with our platform with unique protocol. Unique link for each Distributor and Client to control our platform and manage the data of each component.

### BASIC PLATFORM

Standard Data Smart Components  
Extra cost for more Components

### PREMIUM PLATFORM

Standard Data Smart Components  
Extra cost for more Components

### FULL PLATFORM

Extra Data Smart Components  
Extra cost for Special Components

- Our Platform is configured with the standard components in all our models.
- Standard components connected to an NVIDIA AI Jetson Box to be able to control all Standard components and manage data.
- Each Jetson Box has an extra cost: **MODEL + JETSON BOX + Platform Plan**
- To receive information about our standard components list and prices for Basic/Premium/Full Platform contact: [mori@adlissmart.com](mailto:mori@adlissmart.com) / [Office@OpTeamizer.co.il](mailto:Office@OpTeamizer.co.il)

For more information about our AI NEW GEN Platform contact:

[mori@adlissmart.com](mailto:mori@adlissmart.com)

[Office@OpTeamizer.co.il](mailto:Office@OpTeamizer.co.il)



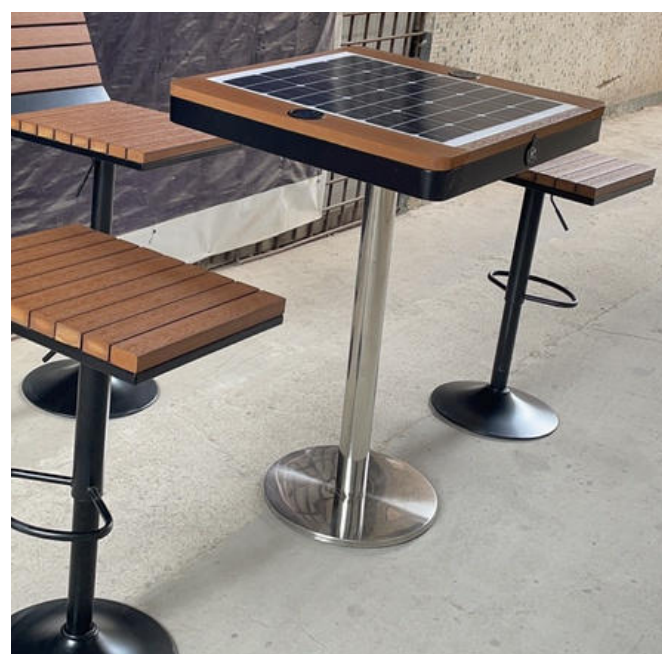
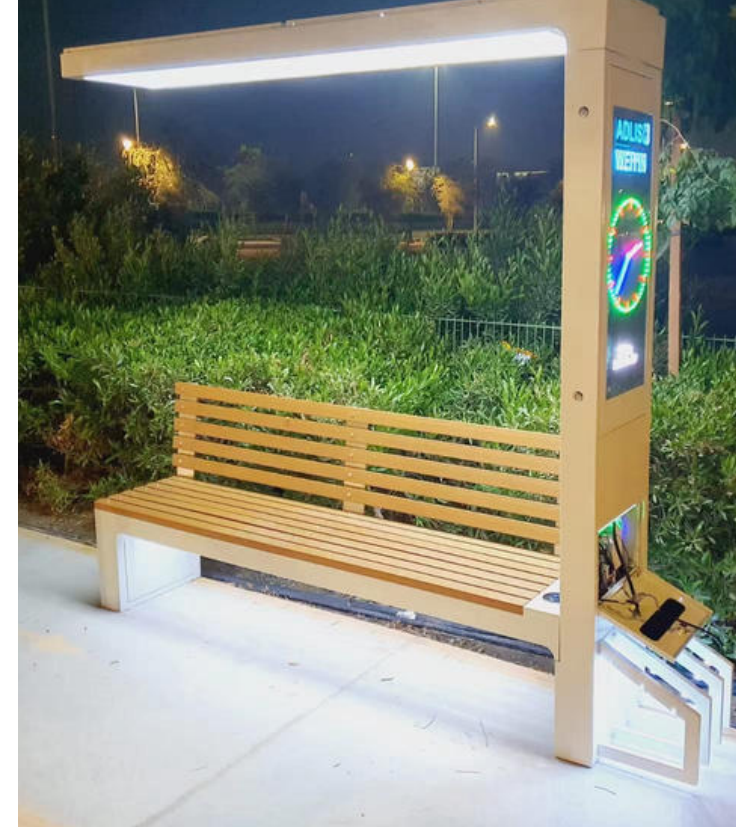
The concept in the new technology is the future.

Simplicity of communication, Individual solutions for customers.

Our concepts reflect our imagination and common sense.

We provide a wide range of services, Design 3D/AR/VR/CAD...

We create all the ideas, manufacturing our and your products



## Solar/No Solar Smart Street Furniture

All our products can be customized to the client's request.

- Paint Colors
- USB
- wireless
- Wood color
- Router
- Advertising

And much more.

We can change the standard measurements of our products but it will have an extra cost for the artwork engineer.



Chief Business Development

Jane Wu

[sales@solarbenchchina.com](mailto:sales@solarbenchchina.com)

0086 13823126631